

05/13/2024

SUNSEEKER 88 YACHT SHINE

JD YACHTS.

JD Yachts
80 The Esplanade
Weymouth
Dorset
United Kingdom
DT4 7AA
Tel: +44 (0)1305 766 504
sales@jdyachts.com



**SUNSEEKER 88 YACHT
SHINE**

GBP 2,095,000 EX TAX

MAIN CHARACTERISTICS

Year:	2011
Hull Colours:	White
Lying:	Corfu, Greece
Engine(s):	2 x 1902 HP Diesel CATERPILLAR C32 ACERT
Hours:	2544
Length:	26.87 m / 88' 2"
Beam:	6.220 m / 20' 5"
Draft:	3.300 m / 10' 10"
Weight:	79 tons
Fuel Capacity:	7500 litres / 1648 gallons
Water Capacity:	1500 litres / 330 gallons
Accommodation:	10 berths in 4 cabins

STANDARD SPECIFICATION

PRINCIPAL FEATURES

Air conditioning
Hydraulic lifting platform
Electric winch and capstan at bow with foredeck controls
Manual side opening helm and galley access doors
Hot and cold swimming shower at stern
Power-assisted steering
Flybridge wetbar with sink, ice maker, fridge and griddle
Flatscreen televisions and DVD/CD player in all guest cabins and crew mess
Surround-sound system DVD/CD/radio in saloon and master stateroom
iPod docking station in main saloon
Aft cockpit bar unit
Electric refrigerator/freezer with ice maker
Ceramic hob, microwave/oven and dishwasher
Electronic depth and speed displays
Radar/chart plotter with GPS

Autopilot
VHF radio (dual station)
Hot and cold water system
Fresh water pump
Toilet system with holding tank
Automatic fire extinguishing system for engine room
Automatic bilge pumps
Slow speed generators with silent exhausts
Fire detection system
AC shorepower/battery charger
Bow thruster
Stern thruster
Trim tabs
Remote controlled spotlight at bow
Deckwash with outlets forward, aft and flybridge
Fresh water marina connection
Teak bathing platform and steps
Teak side decks
Teak cockpit floor
Screen demisters
Stern winches

CONSTRUCTION

Hand-laid GRP
Gel coat including stripes
Vinylester skin coat with powderbound mat
Stitched multi-axial reinforced single skin bottom
Balsa cored hull topsides
PVC foam cored deck and superstructure
Hull stiffened with longitudinal stringers supported by transverse bulkheads and floors

FLYBRIDGE

Self draining cockpit
Acrylic deflecting spray screen
Seating areas
Storage lockers under seating
Teak dining tables (natural finish) with GRP bases
Upholstered sunbathing area forward
Stainless steel aft safety rails
Glass holders
Wetbar unit
Sink in wetbar unit
Ice maker in wetbar unit
Fridge in wetbar unit
Ceramic electric griddle in wetbar unit
Deckwash outlet

Low-level flybridge lighting 24v
Radar arch structure
Radar chair with navigation light assembly
Overhead lighting on underside of radar arch 24v
Two pairs marine speakers (connected to dedicated CD/radio in saloon & controlled by remote keypad at flybridge helm)

FLYBRIDGE HELM

Two helm seats
Hydraulic steering
Duplicate engine controls
Analogue engine instrumentation
Autopilot repeater
Radar/chart plotter with GPS repeater
Depth and speed multi display
VHF second station
Remote spotlight control
Magnetic compass
Steering indicator
Trim tab control
Horn control
Radio/CD remote keypad
Waterproof plug and socket 12v

DECK

Fittings all in 316 stainless steel and chromed bronze
Pair stainless steel bow cleats and fairleads
Stainless steel spring cleats with chafing bars
Pair stern cleats and fairleads
Stainless steel pulpit and cockpit rails
Stainless steel fendering with rubber insert
Stainless steel bow roller with anchor stop and devil's claw
Single electric windlass (Lewmar V8) 24v, starboard side, foredeck control only
Single electric capstan (Lewmar C4) 24v, port side, foredeck control only
Anchor 80kg claw-type (galvanised)
Anchor chain 100 metres/328 feet (12mm diameter, galvanised)
Stainless steel bow plate
Deckwash with outlets forward and aft
Chain locker
Curved direct glazed safety glass windscreen
Pantograph windscreen wipers and washers
Fresh-water filler
Fuel fillers port and starboard
IMCO navigation lights
Remote controlled spotlight at bow

Low-level courtesy lights on side decks 24v
Skylight from VIP stateroom
Bow seat
Bow sunbathing pad
Bow teak table top (natural finish)
Glass holders

AFT COCKPIT

Teak laid cockpit floor
Self-draining
Stairs to flybridge with teak treads
Aft fixed bench seating
Teak table (natural finish) with folding leaves on GRP base
Stern safety gates
Engine room access hatch
2 x stern capstan winches (Lewmar C4)
24v and fairleads
Overhead cockpit lights 24v
Low-level courtesy lights 24v
Pair marine speakers connected to saloon
AV system with Bose PMCI remote
Wetbar unit
Coolbox in wetbar unit
Rubbish bin in wetbar unit

BATHING PLATFORM

Teak-laid hydraulic lifting bathing platform (maximum lifting capacity 650kgs/1433lbs, maximum tender weight 550kgs/1212lbs)
Stairs to aft cockpit with teak treads
Foldout stainless steel swimming ladder
Hot and cold hand-held swimming shower
Fresh-water marina connection
Television and telephone marina connection
Access to crew quarters
Dockside AC connection 1 x 100 amp
Glendinning Cablemaster
Euro spec only: 5m hydraulic telescopic passerelle

SALOON AND DINING

Stainless steel framed sliding patio door to aft cockpit
Patio door curtains with tie back
Sofa seating
Armchair
Coffee table
Scatter cushions
LCD flatscreen television (42") on rise and fall

05/13/2024

SUNSEEKER 88 YACHT SHINE

DVD/CD/radio surround sound system with five speakers and sub woofer (Bose 28)
iPod docking station connected to surround sound system
Control head for flybridge CD/radio
Air conditioning
Side windows with blinds
Drinks cabinet with glassware stowage for eight (8 x Champagne, 8 x whisky, 1 x decanter)
Halogen overhead lighting 24v
Double AC sockets
Sensor connected to fire detection system
Telephone point (aft starboard side)
2 x table lamps
Dining table
8 x free standing dining chairs
Storage cupboards
Fitted carpet
Access forward to main helm position
Door leading to galley
Stairs leading to master stateroom and two guest cabins

GALLEY

American style fridge/freezer with icemaker
4-ring ceramic hob AC
Hob extractor AC
Slimline dishwasher AC
Stainless steel sink
Hot and cold water
Side window with blind
Storage consisting of cupboards, drawers and top-box lockers
Halogen overhead lighting 24v
Lighting under top box lockers 24v
Double AC sockets
Sensor connected to fire detection system
Air conditioning
Door to saloon area
Manual side opening door to port side deck
Microwave/oven AC

MAIN HELM CONSOLE AND OBSERVATION AREA

2 x upholstered helm seats with electric operation
Console with walnut effect fascia
Hydraulic power steering
Steering wheel
Radar/chart plotter with GPS
Autopilot
Depth and speed displays

VHF radio dual station
Magnetic compass
Horn control
Switch panels
Remote spotlight control
Trim tab controls
Rudder indicator
Analogue engine instrumentation
Fresh water gauge
Fuel gauge
Cigar lighter
Main control and monitoring panel (AC/DC) with generators control
Monitoring panel for fire detection system
Windscreen wiper and washer controls
Glass holder
Screen demister
Manual side opening door to starboard side deck
Sofa seat on port side
Air conditioning
Halogen overhead lighting 24v
Fitted carpet
Double AC sockets (port side)
2 x telephone points (port side)
Staircase forward leading to VIP stateroom

FORWARD VIP STATEROOM

Stairs leading from main helm area
Double berth
Foam mattress for berth
Storage beneath berth
Drawers in berth end
Bedside lights 24v
Dressing table
Stool for dressing table
Sofa
Air conditioning
LCD flatscreen television (42") on bulkhead
DVD/CD player with two speakers
Halogen overhead lighting 24v
Two fixed portholes on each side with blind
Skylight with blind
Double AC socket
Fitted carpet
Sensor connected to fire detection system
2 x telephone points (port bedside and dressing table)
Doors to en suite and walk-in wardrobe

FORWARD VIP WALK-IN WARDROBE

Hanging rails
Drawers
Shelves
Full-length mirror
Halogen overhead lighting 24v
AC socket
Fitted carpet
Door to stateroom

FORWARD VIP EN SUITE

Tecma toilet 24v
Vanity top and flooring
Large ceramic washbasin
Taps and accessories (toothbrush and glass holder, soap dispenser, towel rails and towels)
Separate shower compartment
Acrylic folding shower door
Air conditioning outlet
Extractor fan
Mirrored vanity unit
Shelved cupboard
Halogen overhead lighting 24v
Opening porthole with mosquito screen and venetian blind
Shaver socket 240/110v
Door to stateroom

LOWER DECK LOBBY

Stairs leading down from main deck
saloon area
Halogen overhead lighting 24v
AC socket
Fitted carpet
Large bilge access hatch
Sensor connected to fire detection system
Doors leading to lower deck guest accommodation (excluding forward VIP stateroom)

MIDSHIPS MASTER STATEROOM

Double berth
Foam mattress for berth
Storage beneath berth
Drawers in berth end and sides
Bedside units with storage
Bedside lights 24v
Dressing table
Pouffe for dressing table

05/13/2024

SUNSEEKER 88 YACHT SHINE

Sofa

Air conditioning

Halogen overhead lighting 24v

Table lamp

Organic porthole arrangement with blind on each side (outer two portholes openable with mosquito screens)

Double AC sockets

2 x telephone points (dressing table and starboard bedside table)

LCD flatscreen television (42") on bulkhead

DVD/CD/radio surround system with two speakers and sub woofer (Bose 321)

Fitted carpet

Escape hatch on forward bulkhead

Doors to en suite and walk-in wardrobe

MIDSHIPS MASTER WALK-IN WARDROBE

Hanging rails

Drawers

Shelves

Full length mirror

Halogen overhead lighting 24v

AC socket

Fitted carpet

Door to stateroom

MIDSHIPS MASTER EN-SUITE

Tecma toilet 24v

Bidet

Vanity top and flooring

Large ceramic washbasin

Taps and accessories (toothbrush and glass holder, soap dispenser, towel rails and towels)

Separate shower compartment

Acrylic folding shower door

Extractor fan

Air conditioning outlet

Mirror

Halogen overhead lighting 24v

Opening porthole with mosquito screen and venetian blind

Shaver socket 240/110v

Door to stateroom

AFT STARBOARD GUEST CABIN

Two single berths

Pullman Bunk

Foam mattresses for berths
Under berth stowage
2 x reading lights 24v
Wardrobe
Air conditioning
Halogen overhead lighting 24v
Organic porthole arrangement with blind (outer two portholes
openable with mosquito screens)
Double AC socket
Sensor connected to fire detection system
LCD flatscreen television (19")
DVD/CD player with two speakers
Telephone point
Fitted carpet
Doors to en suite and lobby

AFT STARBOARD EN-SUITE

Tecma toilet 24v
Vanity top and flooring
Washbasin
Taps and accessories (toothbrush and glass holder, soap dispenser,
towel rails and towels)
Separate shower compartment
Acrylic folding shower door
Extractor fan
Air conditioning outlet
Vanity unit
Shelved cupboard
Halogen overhead lighting 24v
Opening porthole with mosquito screen and venetian blind
Shaver socket 240/110v
Door to guest cabin

AFT PORT GUEST CABIN

Two single berths
Pullman Bunk
Foam mattresses for berths
Under berth stowage
2 x reading lights 24v
Wardrobe
Air conditioning
Halogen overhead lighting 24v
Organic porthole arrangement with blind (outer two portholes
openable with mosquito screens)
Double AC socket
Sensor connected to fire detection system
LCD flatscreen television (19")

05/13/2024

SUNSEEKER 88 YACHT SHINE

DVD/CD player with two speakers
Telephone point
Fitted carpet
Doors to en suite and lobby

AFT PORT EN-SUITE

Tecma toilet 24v
Vanity top and flooring
Washbasin
Taps and accessories (toothbrush and glass holder, soap dispenser, towel rails and towels)
Separate shower compartment
Acrylic folding shower door
Extractor fan
Air conditioning outlet
Vanity unit
Shelved cupboard
Halogen overhead lighting 24v
Opening porthole with mosquito screen and venetian blind
Shaver socket 240/110v
Door to guest cabin

AFT CREW MESS

Access door from stern
Sink with tap
Worktop with undercounter storage
Air conditioning
Small microwave
Undercounter fridge
AC sockets
Washer/dryer AC
Telephone point
Sensor connected to fire detection system
Halogen overhead lighting 24v
Opening porthole with mosquito screen and venetian blind
Seating area
Table
LCD flatscreen television (19")
DVD/CD with two speakers
Non slip safety flooring
Doors to crew cabins and crew toilet/shower
Watertight door to engine room

CREW CABIN

2 x Twin bunk berths
Foam mattresses for berths

05/13/2024

SUNSEEKER 88 YACHT SHINE

Reading lights 24v

Air conditioning

Wardrobe

Full length mirror on back of cabin door

Halogen overhead lighting 24v

Double AC socket

Telephone point

Sensor connected to fire detection system

CD/radio with two speakers

Fitted carpet

Opening porthole with mosquito screen and curtains

Door to crew mess

EXTRAS

- 3 X 24-Inch Garmin GPSMAP Touchscreen Chartplotters to Lower Helm
- 2 X 9-Inch Garmin GPSMAP Touchscreen Displays to Lower Helm
- 2 X 12-Inch Garmin GPSMAP Touchscreen Chartplotters to Upper Helm
- 2 X 9-Inch Garmin GPSMAP Touchscreen Displays to Lower Helm
- Garmin Dash Mounted Remote Controls for both Helm Stations
- Garmin Panoptix 3D Sonar
- Open Array Radar Scanner
- Garmin Autopilot Head Units to both Helm Stations
- Garmin MFD to both Helm Stations
- Garmin VHF to both Helm Stations
- TRAC Fin Stabilisers
- TRAC Hydraulic Bow & Stern Thrusters
- Opening Flybridge Hardtop
- Underwater lights - Aqualuma Series 6 white LED
- Watermaker
- Ice Maker to Cockpit Wetbar
- Ice Maker to Flybridge Wetbar
- Wine Fridge to Saloon
- Washing Machine to Crew Quarters
- Dishwasher to Galley
- 2 X Onan Generators

















05/13/2024

SUNSEEKER 88 YACHT SHINE



05/13/2024

SUNSEEKER 88 YACHT SHINE













05/13/2024

SUNSEEKER 88 YACHT SHINE



























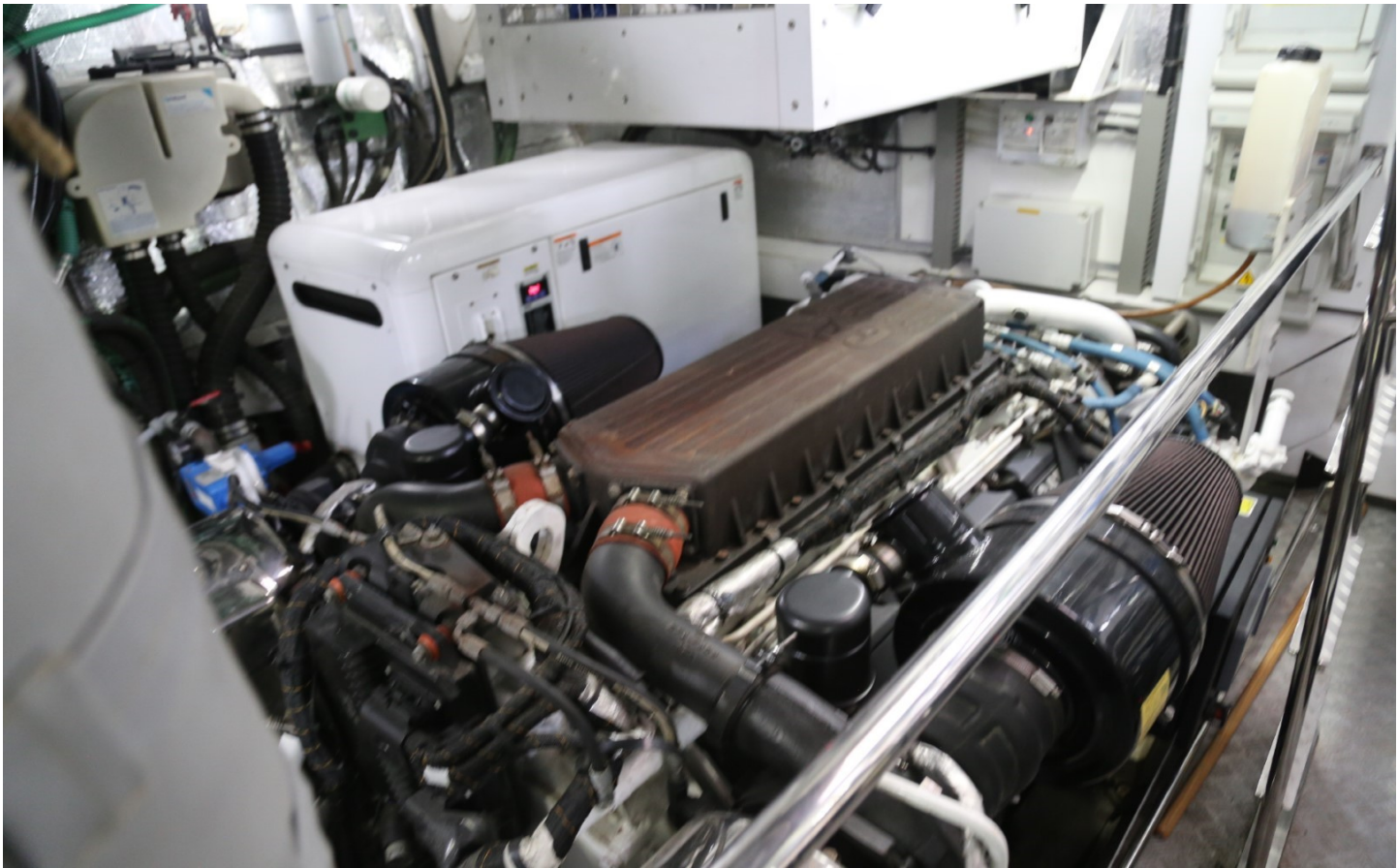




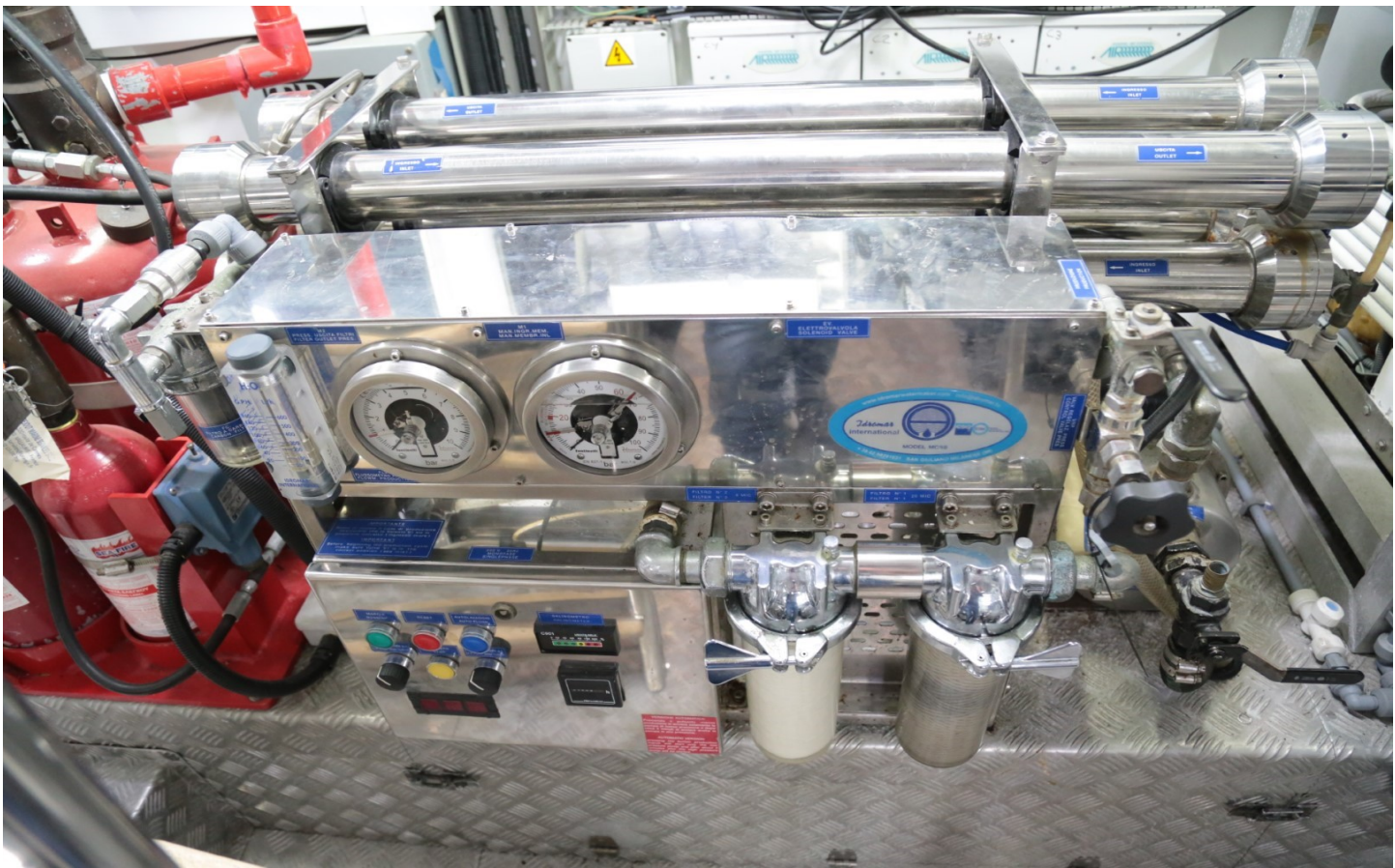














05/13/2024

SUNSEEKER 88 YACHT SHINE



DISCLAIMER

Whilst every care has been taken in the preparation of these particulars, their accuracy is not guaranteed. They are intended as guides only and as such do not constitute a part of any contract. A prospective purchaser is advised to check all particulars and where appropriate and at his own expense to employ a qualified marine surveyor to carry out a survey and/or to have an engine trial conducted, which if conducted by us shall not imply any liability on our part. All dimensions, performance figures & range notes given are approximate and should be treated as a guide only. Pictures may be from a brochure or of a similar vessel. Engine hours shown are correct at the time of preparation of the particulars, but will vary with usage. Availability of specific vessels may be subject to change, we therefore recommend you call for confirmation. N.B. Ribs, dinghies, water toys and out-board engines are not included in the sale unless other wise stated.

+44 (0) 1305 766 504

SALES@JDYACHTS.COM

© JD YACHTS 2002 - 2024. ALL RIGHTS RESERVED.