

05/11/2024

SUNSEEKER MANHATTAN 63

JD YACHTS.

JD Yachts
80 The Esplanade
Weymouth
Dorset
United Kingdom
DT4 7AA
Tel: +44 (0)1305 766 504
sales@jdyachts.com



SUNSEEKER MANHATTAN 63

EUR 1,075,000 INC TAX

MAIN CHARACTERISTICS

Year:	2013
Hull Colours:	White
Lying:	North Jutland, Denmark
Engine(s):	2 x 1000 HP Diesel MAN V8
Hours:	550
Length:	21.07 m / 69' 2"
Beam:	5.130 m / 16' 10"
Draft:	1.530 m / 5' 0"
Weight:	39 tons
Fuel Capacity:	3500 litres / 769 gallons
Water Capacity:	816 litres / 179 gallons
Accommodation:	6 berths in 3 cabins

STANDARD SPECIFICATION

CONSTRUCTION

Hand-laid GRP
Gel coat including stripes
Isophthalic polyester skin coat with
powderbound mat
Stitched multi-axial reinforced single-skin bottom
Balsa-cored hull topsides and deck
Hull stiffened with longitudinal stringers

DECK

Fittings all in stainless steel
8 deck cleats in stainless steel
Delta anchor and 60m chain (galvanised)
Electric winch and capstan 24v with deck and cockpit controls 24v
Stemhead roller and anchor stop
Self-draining chain locker-fender stowage
Pulpit and cockpit rails in stainless steel
Stainless steel fendering with rubber insert

IMCO navigation lights
3 pantograph wipers 24v, windscreen washers
Ensign staff and socket
6 fenders and 4 warps
Remote spotlight 24v
Curved safety glass windscreen

BATHING PLATFORM

Fresh water marina connection
Dockside AC shore power connection
Hot and cold swimming shower
Teak-laid bathing platform
Foldaway stainless steel swimming ladder
Hydraulic lifting platform

AFT COCKPIT

Self-draining
Moulded staircase to flybridge
Transom storage locker
Upholstered seating
Transom safety gates
Engine room access hatch
Overhead lighting 24v
Low-level courtesy lighting 24v
Two external marine speakers
Teak-laid cockpit and steps
Boat hook
Hand-held fire extinguisher

FLYBRIDGE HELM POSITION

Self-draining
Deflecting front screen
Hydraulic steering
Chrome steering wheel
Duplicate engine controls and instrumentation
Compass
Trim tab control
Echo sounder and speedlog repeaters
Bow thruster control
Autopilot and GPS navigator controls
12v socket
Instrument cover
Upholstered seating
Storage below seats
Cockpit table
Sunbathing area forward

Stainless steel guard rails and grab rails
Glass holders
Radio/CD remote control
Two external marine speakers
Low-level courtesy lights

SALOON

Large dining table fixed outboard and loose inboard chairs
Lower saloon seating
Coffee table
Drinks cabinet
Stainless steel sliding cockpit door to aft deck
Flatscreen television 40"
DVD cinema surround system
iPod radio for external speakers
Overhead halogen lighting 24v
2 x double AC socket
Main switch panel (AC/DC) with circuit breaker protection and generator controls
Choice of lacquered interior finishes and veneer
Scatter cushions
Fitted carpet

GALLEY

Sink and drainer
Hot and cold water
Electric refrigerator
Electric freezer
Ceramic hob
Hob extractor fan
Microwave combination oven
Rubbish bin
6 place crockery set
6 place cutlery set
Cupboard and drawer storage
Double AC socket x 2
Hand-held fire extinguisher
First aid

MAIN HELM CONSOLE

Leather electric helm seat
Console with burr walnut type fascia
Hydraulic steering
Leather rimmed chrome steering wheel
Radar/Plotter
Autopilot

VHF radio dual station
Analogue and digital engine instrumentation
Electric speed and depth sounder
Rudder indicator
Compass
Bow thruster control
Horn
Windscreen wipers and washers
Trim tab controls
Cigar lighter 12v
Opening helm side door
Glass holders
Hand-held fire extinguisher

MASTER AFT CABIN

Double berth
2 reading lights 24v
Bedside and outboard cupboards
Settee
Halogen overhead lighting 24v
Panoramic side windows with opening portholes and curtains
Double AC socket x 2
Flatscreen television
Fitted carpet
Walk-in hanging wardrobe with mirror
Door to en suite toilet/shower

MASTER EN SUITE SHOWER ROOM

Electric toilet
Avonite counter top with soap dispenser
Mirrored vanity unit
Washbasin and tap
Hot and cold water
Toothbrush and glass holder
Towel ring, towel rail and towels
Separate shower compartment
Extractor fan
Halogen overhead light 24v
Opening porthole with mosquito screen and blind
Shaver socket 240/110v

VIP FORWARD STATEROOM

Double berth
Drawers and storage beneath
Wardrobe
Halogen overhead lights 24v

2 x reading lights 24v
2 x opening portholes with mosquito screens and curtains
Deck hatch with screen
Double 240v AC socket
Flatscreen television
Fitted carpet
Door to en suite toilet/shower

FORWARD EN SUITE SHOWER ROOM AND TOILET

Electric toilet
Avonite counter top with soap dispenser
Mirrored vanity unit
Washbasin and tap
Hot and cold water
Toothbrush and glass holder
Towel ring, towel rail and towels
Separate shower compartment
Extractor fan
Halogen overhead light 24v
Opening porthole with mosquito screen and blind
Shaver socket 240/110v

STARBOARD GUEST CABIN

2 single berths
Bedside table with drawer
2 reading lights
Under-berth stowage
Full hanging mirrored wardrobe
Overhead halogen lights
Opening porthole with mosquito screen and curtain
Double AC socket
Door to en suite shower room
Flatscreen television
Fitted carpet
Door to en suite toilet/shower

STARBOARD GUEST SHOWER AND TOILET/ DAY HEAD

Electric toilet
Avonite counter top with soap dispenser
Mirrored vanity unit
Washbasin and tap
Hot and cold water
Toothbrush and glass holder
Towel ring, towel rail and towels
Separate shower compartment
Extractor fan

05/11/2024

SUNSEEKER MANHATTAN 63

Halogen overhead light 24v

Opening porthole with mosquito screen and blind

Shaver socket 240/110v

EXTRAS

- Reverse-Cycle Air Conditioning Throughout
- SidePower Bow Thruster
- SidePower Stern Thruster
- Hi-Lo Hydraulic Bathing Platform
- Telescopic Passarelle
- Diesel Generator 19 kwh
- Full Raymarine Navigation Equipment
- Underwater Lights
- Teak Laid Bathing Platform
- Teak Laid Cockpit
- Teak Laid Flybridge
- Wooden Floor to Saloon & Galley
- Teak Laid Bathing Platform
- Teak Laid Cockpit
- Teak Laid Flybridge
- Wooden Floor to Saloon & Galley
- KVH TracVision
- Cocktail cabinet with refrigerator
- Icemaker
- Watermaker
- Flybridge wet bar with grill
- Dishwasher
- Washer/ Dryer
- Bimini Top
- Unfitted Crew Cabin for Storage

OWNER COMMENTS

Polished, antifouled and serviced, ready for new owner







05/11/2024

SUNSEEKER MANHATTAN 63





05/11/2024

SUNSEEKER MANHATTAN 63



05/11/2024

SUNSEEKER MANHATTAN 63





05/11/2024

SUNSEEKER MANHATTAN 63







05/11/2024

SUNSEEKER MANHATTAN 63



05/11/2024

SUNSEEKER MANHATTAN 63





05/11/2024

SUNSEEKER MANHATTAN 63



05/11/2024

SUNSEEKER MANHATTAN 63



05/11/2024

SUNSEEKER MANHATTAN 63









05/11/2024

SUNSEEKER MANHATTAN 63



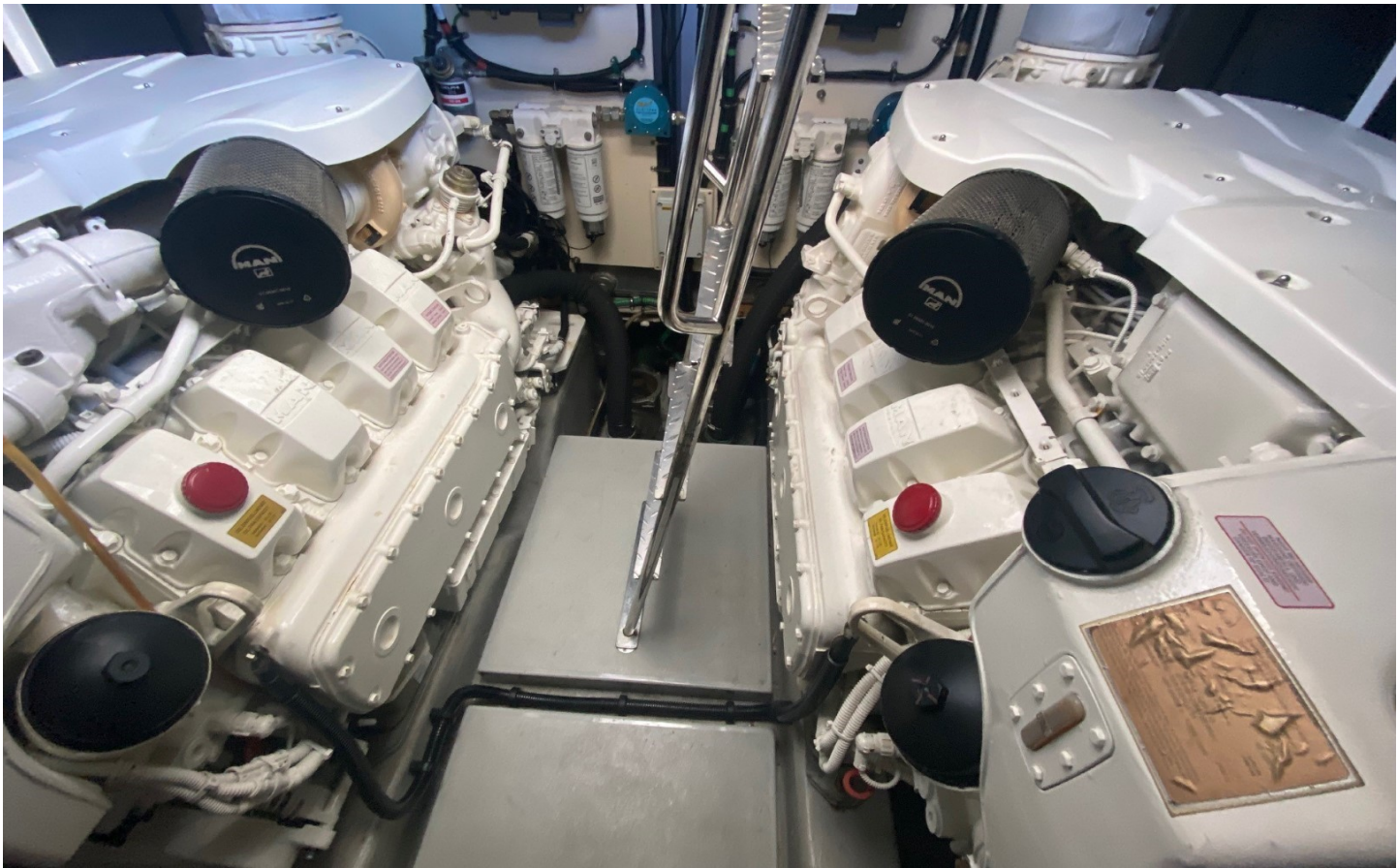


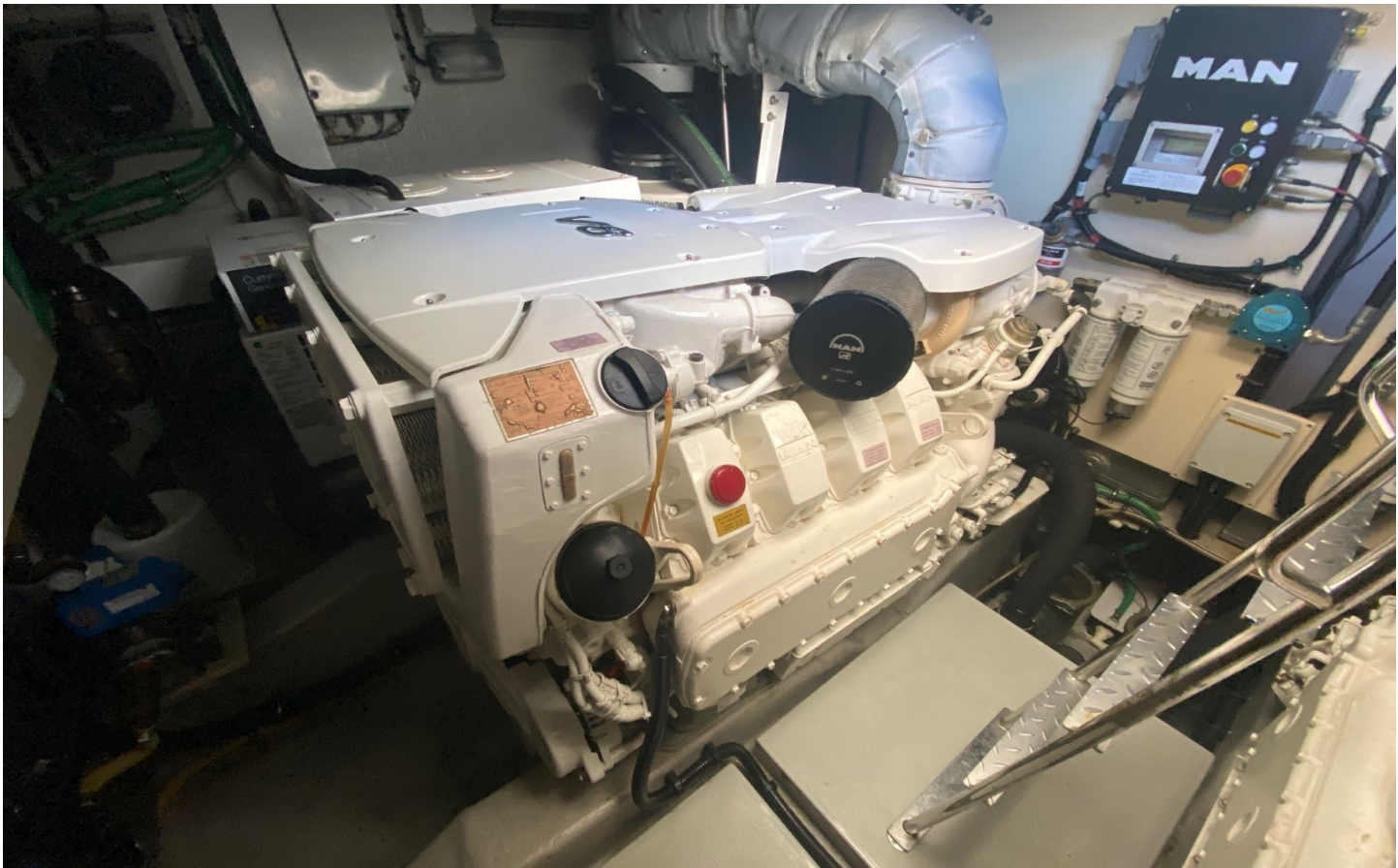
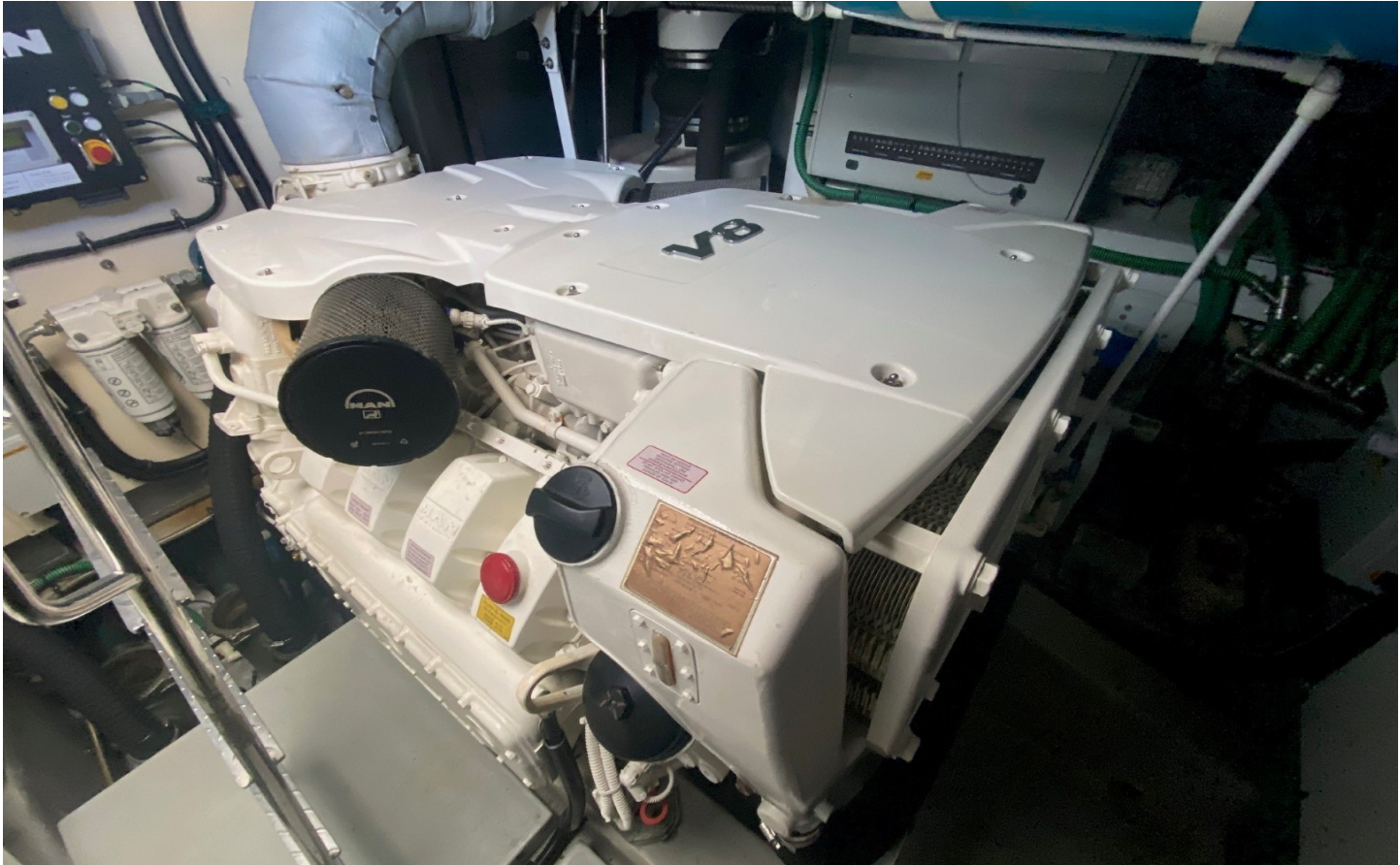
















DISCLAIMER

Whilst every care has been taken in the preparation of these particulars, their accuracy is not guaranteed. They are intended as guides only and as such do not constitute a part of any contract. A prospective purchaser is advised to check all particulars and where appropriate and at his own expense to employ a qualified marine surveyor to carry out a survey and/or to have an engine trial conducted, which if conducted by us shall not imply any liability on our part. All dimensions, performance figures & range notes given are approximate and should be treated as a guide only. Pictures may be from a brochure or of a similar vessel. Engine hours shown are correct at the time of preparation of the particulars, but will vary with usage. Availability of specific vessels may be subject to change, we therefore recommend you call for confirmation. N.B. Ribs, dinghies, water toys and out-board engines are not included in the sale unless other wise stated.

+44 (0) 1305 766 504

SALES@JDYACHTS.COM

© JD YACHTS 2002 - 2024. ALL RIGHTS RESERVED.