

05/11/2024

FAIRLINE PHANTOM 40 NORTH STAR

**JD YACHTS.**

JD Yachts  
80 The Esplanade  
Weymouth  
Dorset  
United Kingdom  
DT4 7AA  
Tel: +44 (0)1305 766 504  
sales@jdyachts.com



**FAIRLINE PHANTOM 40**

**NORTH STAR**

GBP 189,950 INC TAX

## MAIN CHARACTERISTICS

Year:	2004
Hull Colours:	White
Lying:	Eastbourne, UK
Engine(s):	2 x 370 HP Diesel Volvo TAMD 63P
Hours:	424
Length:	12.53 m / 41' 1"
Beam:	3.950 m / 12' 12"
Draft:	1.000 m / 3' 3"
Weight:	20 tons
Fuel Capacity:	996 litres / 219 gallons
Water Capacity:	450 litres / 99 gallons
Accommodation:	6 berths in 2 cabins

## STANDARD SPECIFICATION

### HULLFORM AND CONSTRUCTION

All gel coat and glass fibre hand laid with unidirectional, biaxial and woven rovings

Antifouling protection to hull

Deep 'V' forward; 18° deadrise aft

Designed by Bernard Olesinski and the Fairline design team

Full length moulded spray deflectors

Hull/deck join bolted and bonded

Integrally moulded engine bearers

Isophthalic gel coat backed by isophthalic resin-rich powder-bound glass mat

The deck incorporates polyurethane foam cores for high strength and excellent thermal insulation

The integral bathing platform gives the boat a longer waterline length for improved performance, particularly at reduced power settings

The propellers are set in semi-tunnels enabling the engines to be located further aft, also reducing draught and improving efficiency by reducing the shaft angle

Transverse and longitudinal strengthening stringers throughout hull

**DECK**

Anchor chain locker  
Anchor winch controls  
Anchor winch (electric)  
Calibrated anchor chain  
Concealed telescopic swim ladder to bathing platform  
External covers to windscreen  
Full set of IMCO navigation lights  
Hot and cold water transom shower  
Moulded non-slip deck surface  
Pantograph windscreen wipers  
Recessed self-draining area on foredeck for coachroof sun cushions  
Riding light  
Rubbing strake  
Self-stowing Delta® anchor  
Stainless steel bow fairlead(s)  
Stainless steel bow, spring and stern cleats  
Stainless steel grab rail(s) on each transom wing  
Stainless steel handrails  
Stainless steel pulpit  
Stainless steel pushpit  
Stainless steel stemhead roller  
Teak-laid bathing platform  
Toughened glass curved windscreen  
Transom gate from cockpit to integral bathing platform  
Twin horns  
Water filler(s)  
Windscreen washers

**FLYBRIDGE AND SECOND HELM POSITION**

12v heavy duty weatherproof socket  
Access hatch  
Adjustable bolstered helm seating  
Adjustable/tilt steering wheel  
Bilge pump warning lights and audible alarms  
Chaise-longue seat  
Companion seating to helm  
Drinks holders  
Echosounder and speedometer/distance log repeater(s) with sea water temperature read out  
Electronic single-lever throttle and gear controls for port and starboard engines  
Furniture covers  
Helm position indicator  
High speed magnetic compass

Instrument covers  
Moulded non-slip deck surface  
Remote anchor winch controls  
Repeat flybridge engine instrumentation, controls and electronics  
Remote control searchlight with controls at both helm stations  
Stainless steel handrails  
Teak-laid oversize flybridge steps  
Trim tab controls  
Upholstered seating area with table, convertible to cushioned sunbathing area  
VHF radio telephone incorporating intercom  
Wind-deflecting screen with grab rail

### **AFT COCKPIT/TRANSOM**

12v heavy duty weatherproof socket  
Access hatch to engine room and lazarette  
Aft cockpit enclosure covers  
Cushioned rear seating with access to stowage locker and gas locker  
Cockpit lights  
Engine bay access hatch with stainless steel ram  
Manual bilge pump(s)  
Stainless steel-framed sliding door to main saloon  
Teak-laid floor throughout self-draining cockpit  
Warp lockers

### **MAIN HELM POSITION**

12v socket  
Adjustable/tilt steering wheel  
Bilge pump switches with integral operating warning lights and audible alarms  
Bolstered helm seat(s)  
Chart stowage  
Chart table and light  
Control panel for 12v/240v domestic electrical circuits  
Controls for engine bay fire extinguisher system  
Echosounder and speedometer/distance log repeater(s) with sea water temperature read out  
Electronic single-lever throttle and gear controls for port and starboard engines  
Fuel gauges  
Full engine instrumentation including; tachometers, oil pressure gauges, temperature gauges, battery condition indicators, audible alarms and engine hour meters  
Helm position indicator  
High speed magnetic compass



05/11/2024

## FAIRLINE PHANTOM 40 NORTH STAR

Hydraulic steering  
Madrona finish instrument panel  
Opening side window (manual)  
Red night-light illumination to helm  
Remote anchor winch controls  
Searchlight controls  
Switches for navigation and riding lights, windscreen wipers and engine bay extractor fans  
Teak and holly floor  
Trim tab controls  
VHF radio telephone incorporating intercom

### **MAIN SALOON**

Access to engine bay  
Aerial and connections for television  
CD/radio  
Cocktail cabinet  
Cocktail table converts to dining table with additional stools  
Full-height standing headroom  
Halogen ceiling lights  
Handrail  
LCD TV  
Sideboard to port with optional refrigerator or icemaker  
Sofa

### **GALLEY**

Crockery stowage  
Extractor fan  
Foundations® work surface with covers  
Halogen ceiling lights  
Integrated waste bin  
Lacquered cupboard doors  
Recessed 2-burner gas hob, oven and grill  
Refrigerator/freezer with automatic 12v/240v changeover  
Sink with hot and cold mixer tap  
Teak and holly floor  
Underfloor stowage hold or optional freezer  
Work surface lights

### **MASTER CABIN**

Access to en suite bathroom  
Bedside stowage

Drawer(s) under bed  
Full-height standing headroom  
Halogen ceiling lights  
Large hatch with flyscreen and concealed blinds to foredeck  
Mirror  
Oversized double bed  
Reading lights  
Stainless steel opening porthole(s) with flyscreen  
Upholstered bedhead  
Wardrobe(s)

### **MASTER EN SUITE BATHROOM**

220v/240v shaving point  
Automatic shower tray pump-out system  
Electric silent-flush freshwater toilet  
Extractor fan  
Foundations® or Avonite® vanity unit locker and basin with hot and cold pressurised water  
Full set of bathroom fittings  
Full standing height circular shower with rotating screen  
Halogen ceiling lights  
Mirror  
Stainless steel opening porthole(s) with flyscreen

### **STARBOARD GUEST CABIN**

Access to AC/DC distribution panel  
Access to en suite bathroom  
Bedside stowage  
Full length berths x 2  
Halogen ceiling lights  
Lockers (mid-level)  
Mirror  
Reading lights  
Stainless steel opening porthole(s) with flyscreen  
Wardrobe(s)

### **SHOWER/WC COMPARTMENT**

220v/240v shaving point  
Automatic shower tray pump-out system  
Electric silent-flush freshwater toilet  
Extractor fan  
Foundations® or Avonite® vanity unit locker and basin with hot and cold pressurised water

Full set of bathroom fittings  
Full standing height circular shower with rotating screen  
Mirror  
Stainless steel opening porthole(s) with flyscreen  
Worktop options

## **ELECTRICAL SYSTEMS**

All 240v, 24v and 12v circuits (where applicable) protected by circuit breakers with main electrical load control panel  
Electrical sockets  
Heavy duty circuit breakers  
Isolating switches to all batteries  
12 Volt  
Batteries - 2 x 165Ah wired in parallel supplying domestic services  
Battery - 1 x 135Ah exclusively for port engine starting  
Battery - 1 x 135Ah exclusively for starboard engine starting  
240 Volt  
Polarity check and earth leakage protection system  
Power points throughout the boat (fed from shore power or generator)  
Regulated charger 50amp  
Shore power supply

## **ENGINES AND STERNGEAR**

Access through cockpit hatch  
Aerodynamically designed engine air intakes  
Automatic engine bay fire extinguisher system with warnings at both helms  
Automatic bilge pumps for forward bilge, engine bay and rudder bay with manual 'on' override  
Balanced rudders  
Cathodic protection  
Dripless shaft seals  
Electric engine bay fan(s)  
Electro-hydraulic trim tabs with cathodic protection  
Engine bay lights  
Engine room soundproofing  
Exhaust overheat warning system  
High capacity emergency manual bilge pump system with changeover valves  
Manganese bronze 'P' brackets  
Manganese bronze propellers contra-rotating  
Sea cocks on all inlets/outlets below waterline  
Stainless steel alloy shafts  
Water cooled engine exhausts with silencers and side outlets

## **FUEL SYSTEM**

Changeover valve system to permit each engine to draw fuel from, and return fuel to, either tank

Emergency fuel shut-off valves accessible via cable-operated remote control

High capacity water separators and fuel filters

Individual fillers and vents to port and starboard

Marine grade alloy fuel tanks x 2

## **FRESHWATER SYSTEM**

Automatic, pressurised supply

Calorifier hot water system

Water tank(s)

## **GAS**

All gas burners fitted with flame failure protection devices

Copper, polythene sheathed supply pipe

Single tail feed with regulator and gas low system test meter

Stowage for gas bottle in self-venting cockpit locker

## **EXTRAS**

- NEW Stern Thruster with Remote Control
- Bow Thruster
- Eberspacher Heating System
- Lewmar Anchor
- Holding Tank
- Raymarine E120 GPS/ Chartplotter to Upper & Lower Helm
- Raymarine Autopilot ST6001
- Electric Lewmar Windlass
- Flybridge Wetbar with Griddle
- Saloon Conversion to Double Berth
- Teak Laid Bathing Platform
- Teak Laid Cockpit
- Cherrywood Throughout
- Flat Screen TV to Saloon
- JVC Sound System

## **OWNER COMMENTS**

Antifouled and polished August 2023 Part-exchange considered

05/11/2024

FAIRLINE PHANTOM 40 NORTH STAR





05/11/2024

FAIRLINE PHANTOM 40 NORTH STAR









05/11/2024

FAIRLINE PHANTOM 40 NORTH STAR





05/11/2024

FAIRLINE PHANTOM 40 NORTH STAR





05/11/2024

FAIRLINE PHANTOM 40 NORTH STAR





05/11/2024

FAIRLINE PHANTOM 40 NORTH STAR





05/11/2024

FAIRLINE PHANTOM 40 NORTH STAR





05/11/2024

FAIRLINE PHANTOM 40 NORTH STAR









05/11/2024

FAIRLINE PHANTOM 40 NORTH STAR





05/11/2024

FAIRLINE PHANTOM 40 NORTH STAR





05/11/2024

FAIRLINE PHANTOM 40 NORTH STAR













05/11/2024

FAIRLINE PHANTOM 40 NORTH STAR



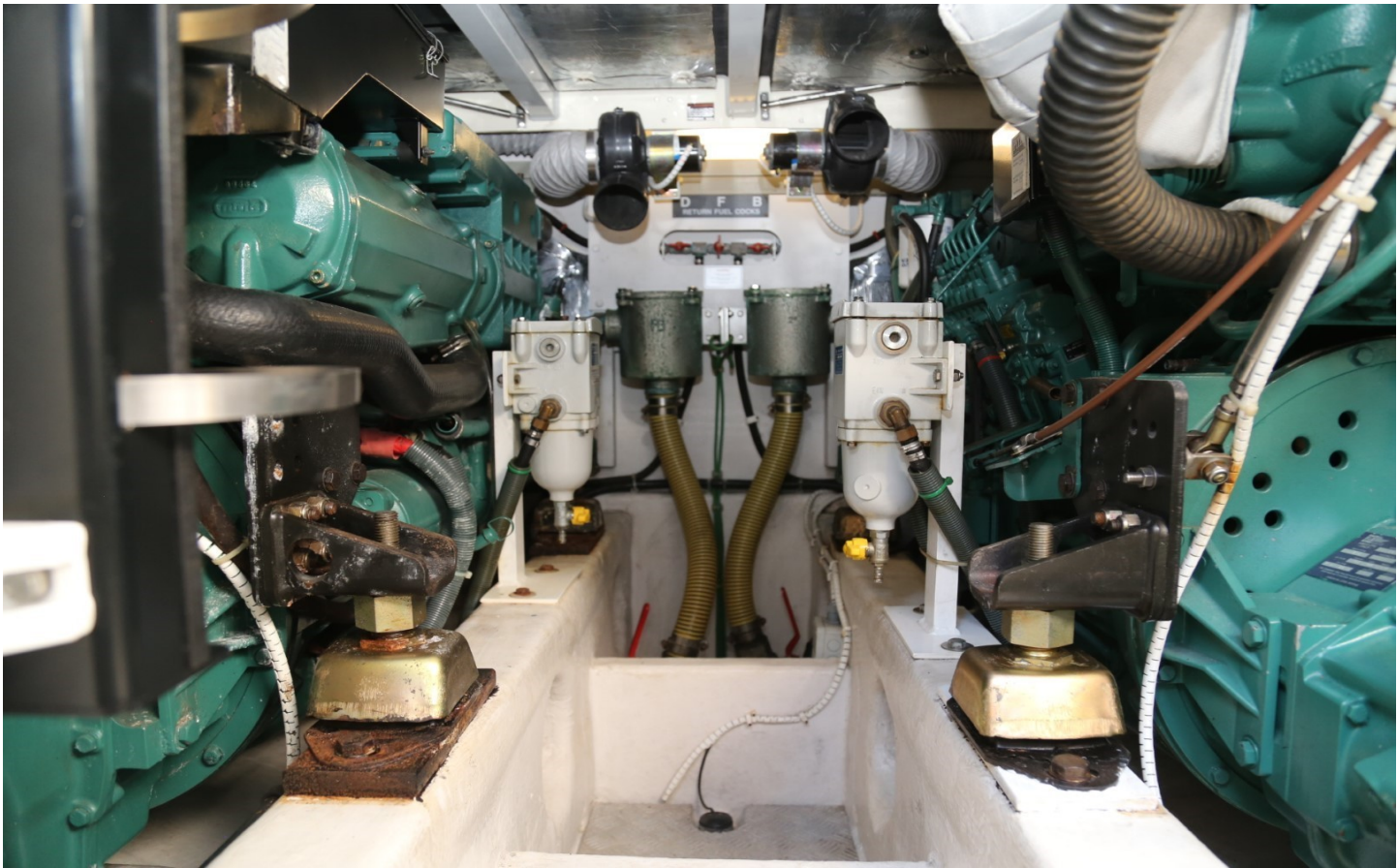
















## DISCLAIMER

Whilst every care has been taken in the preparation of these particulars, their accuracy is not guaranteed. They are intended as guides only and as such do not constitute a part of any contract. A prospective purchaser is advised to check all particulars and where appropriate and at his own expense to employ a qualified marine surveyor to carry out a survey and/or to have an engine trial conducted, which if conducted by us shall not imply any liability on our part. All dimensions, performance figures & range notes given are approximate and should be treated as a guide only. Pictures may be from a brochure or of a similar vessel. Engine hours shown are correct at the time of preparation of the particulars, but will vary with usage. Availability of specific vessels may be subject to change, we therefore recommend you call for confirmation. N.B. Ribs, dinghies, water toys and out-board engines are not included in the sale unless other wise stated.

+44 (0) 1305 766 504

SALES@JDYACHTS.COM

© JD YACHTS 2002 - 2024. ALL RIGHTS RESERVED.