

05/09/2024

SUNSEEKER MANHATTAN 63

**JD YACHTS.**

JD Yachts  
80 The Esplanade  
Weymouth  
Dorset  
United Kingdom  
DT4 7AA  
Tel: +44 (0)1305 766 504  
sales@jdyachts.com



**SUNSEEKER MANHATTAN 63**

EUR 1,075,000 INC TAX

## MAIN CHARACTERISTICS

|                 |                           |
|-----------------|---------------------------|
| Year:           | 2013                      |
| Hull Colours:   | White                     |
| Lying:          | North Jutland, Denmark    |
| Engine(s):      | 2 x 1000 HP Diesel MAN V8 |
| Hours:          | 550                       |
| Length:         | 21.07 m / 69' 2"          |
| Beam:           | 5.130 m / 16' 10"         |
| Draft:          | 1.530 m / 5' 0"           |
| Weight:         | 39 tons                   |
| Fuel Capacity:  | 3500 litres / 769 gallons |
| Water Capacity: | 816 litres / 179 gallons  |
| Accommodation:  | 6 berths in 3 cabins      |

## STANDARD SPECIFICATION

### CONSTRUCTION

Hand-laid GRP  
Gel coat including stripes  
Isophthalic polyester skin coat with powderbound mat  
Stitched multi-axial reinforced single-skin bottom  
Balsa-cored hull topsides and deck  
Hull stiffened with longitudinal stringers

### DECK

Fittings all in stainless steel  
8 deck cleats in stainless steel  
Delta anchor and 60m chain (galvanised)  
Electric winch and capstan 24v with deck and cockpit controls 24v  
Stemhead roller and anchor stop  
Self-draining chain locker-fender stowage  
Pulpit and cockpit rails in stainless steel  
Stainless steel fendering with rubber insert

IMCO navigation lights  
3 pantograph wipers 24v, windscreen washers  
Ensign staff and socket  
6 fenders and 4 warps  
Remote spotlight 24v  
Curved safety glass windscreen

### **BATHING PLATFORM**

Fresh water marina connection  
Dockside AC shore power connection  
Hot and cold swimming shower  
Teak-laid bathing platform  
Foldaway stainless steel swimming ladder  
Hydraulic lifting platform

### **AFT COCKPIT**

Self-draining  
Moulded staircase to flybridge  
Transom storage locker  
Upholstered seating  
Transom safety gates  
Engine room access hatch  
Overhead lighting 24v  
Low-level courtesy lighting 24v  
Two external marine speakers  
Teak-laid cockpit and steps  
Boat hook  
Hand-held fire extinguisher

### **FLYBRIDGE HELM POSITION**

Self-draining  
Deflecting front screen  
Hydraulic steering  
Chrome steering wheel  
Duplicate engine controls and instrumentation  
Compass  
Trim tab control  
Echo sounder and speedlog repeaters  
Bow thruster control  
Autopilot and GPS navigator controls  
12v socket  
Instrument cover  
Upholstered seating  
Storage below seats  
Cockpit table  
Sunbathing area forward

Stainless steel guard rails and grab rails  
Glass holders  
Radio/CD remote control  
Two external marine speakers  
Low-level courtesy lights

## **SALOON**

Large dining table fixed outboard and loose inboard chairs  
Lower saloon seating  
Coffee table  
Drinks cabinet  
Stainless steel sliding cockpit door to aft deck  
Flatscreen television 40"  
DVD cinema surround system  
iPod radio for external speakers  
Overhead halogen lighting 24v  
2 x double AC socket  
Main switch panel (AC/DC) with circuit breaker protection and generator controls  
Choice of lacquered interior finishes and veneer  
Scatter cushions  
Fitted carpet

## **GALLEY**

Sink and drainer  
Hot and cold water  
Electric refrigerator  
Electric freezer  
Ceramic hob  
Hob extractor fan  
Microwave combination oven  
Rubbish bin  
6 place crockery set  
6 place cutlery set  
Cupboard and drawer storage  
Double AC socket x 2  
Hand-held fire extinguisher  
First aid

## **MAIN HELM CONSOLE**

Leather electric helm seat  
Console with burr walnut type fascia  
Hydraulic steering  
Leather rimmed chrome steering wheel  
Radar/Plotter  
Autopilot



VHF radio dual station  
Analogue and digital engine instrumentation  
Electric speed and depth sounder  
Rudder indicator  
Compass  
Bow thruster control  
Horn  
Windscreen wipers and washers  
Trim tab controls  
Cigar lighter 12v  
Opening helm side door  
Glass holders  
Hand-held fire extinguisher

### **MASTER AFT CABIN**

Double berth  
2 reading lights 24v  
Bedside and outboard cupboards  
Settee  
Halogen overhead lighting 24v  
Panoramic side windows with opening portholes and curtains  
Double AC socket x 2  
Flatscreen television  
Fitted carpet  
Walk-in hanging wardrobe with mirror  
Door to en suite toilet/shower

### **MASTER EN SUITE SHOWER ROOM**

Electric toilet  
Avonite counter top with soap dispenser  
Mirrored vanity unit  
Washbasin and tap  
Hot and cold water  
Toothbrush and glass holder  
Towel ring, towel rail and towels  
Separate shower compartment  
Extractor fan  
Halogen overhead light 24v  
Opening porthole with mosquito screen and blind  
Shaver socket 240/110v

### **VIP FORWARD STATEROOM**

Double berth  
Drawers and storage beneath  
Wardrobe  
Halogen overhead lights 24v

2 x reading lights 24v  
2 x opening portholes with mosquito screens and curtains  
Deck hatch with screen  
Double 240v AC socket  
Flatscreen television  
Fitted carpet  
Door to en suite toilet/shower

### **FORWARD EN SUITE SHOWER ROOM AND TOILET**

Electric toilet  
Avonite counter top with soap dispenser  
Mirrored vanity unit  
Washbasin and tap  
Hot and cold water  
Toothbrush and glass holder  
Towel ring, towel rail and towels  
Separate shower compartment  
Extractor fan  
Halogen overhead light 24v  
Opening porthole with mosquito screen and blind  
Shaver socket 240/110v

### **STARBOARD GUEST CABIN**

2 single berths  
Bedside table with drawer  
2 reading lights  
Under-berth stowage  
Full hanging mirrored wardrobe  
Overhead halogen lights  
Opening porthole with mosquito screen and curtain  
Double AC socket  
Door to en suite shower room  
Flatscreen television  
Fitted carpet  
Door to en suite toilet/shower

### **STARBOARD GUEST SHOWER AND TOILET/ DAY HEAD**

Electric toilet  
Avonite counter top with soap dispenser  
Mirrored vanity unit  
Washbasin and tap  
Hot and cold water  
Toothbrush and glass holder  
Towel ring, towel rail and towels  
Separate shower compartment  
Extractor fan

05/09/2024

SUNSEEKER MANHATTAN 63

- Halogen overhead light 24v
- Opening porthole with mosquito screen and blind
- Shaver socket 240/110v

**EXTRAS**

- Reverse-Cycle Air Conditioning Throughout
- SidePower Bow Thruster
- SidePower Stern Thruster
- Hi-Lo Hydraulic Bathing Platform
- Telescopic Passarelle
- Diesel Generator 19 kwh
- Full Raymarine Navigation Equipment
- Underwater Lights
- Teak Laid Bathing Platform
- Teak Laid Cockpit
- Teak Laid Flybridge
- Wooden Floor to Saloon & Galley
- Teak Laid Bathing Platform
- Teak Laid Cockpit
- Teak Laid Flybridge
- Wooden Floor to Saloon & Galley
- KVH TracVision
- Cocktail cabinet with refrigerator
- Icemaker
- Watermaker
- Flybridge wet bar with grill
- Dishwasher
- Washer/ Dryer
- Bimini Top
- Unfitted Crew Cabin for Storage

**OWNER COMMENTS**

Polished, antifouled and serviced, ready for new owner













05/09/2024

SUNSEEKER MANHATTAN 63









05/09/2024

SUNSEEKER MANHATTAN 63









05/09/2024

SUNSEEKER MANHATTAN 63









05/09/2024

SUNSEEKER MANHATTAN 63





05/09/2024

SUNSEEKER MANHATTAN 63





05/09/2024

SUNSEEKER MANHATTAN 63





05/09/2024

SUNSEEKER MANHATTAN 63









05/09/2024

SUNSEEKER MANHATTAN 63









05/09/2024

SUNSEEKER MANHATTAN 63

















05/09/2024

SUNSEEKER MANHATTAN 63















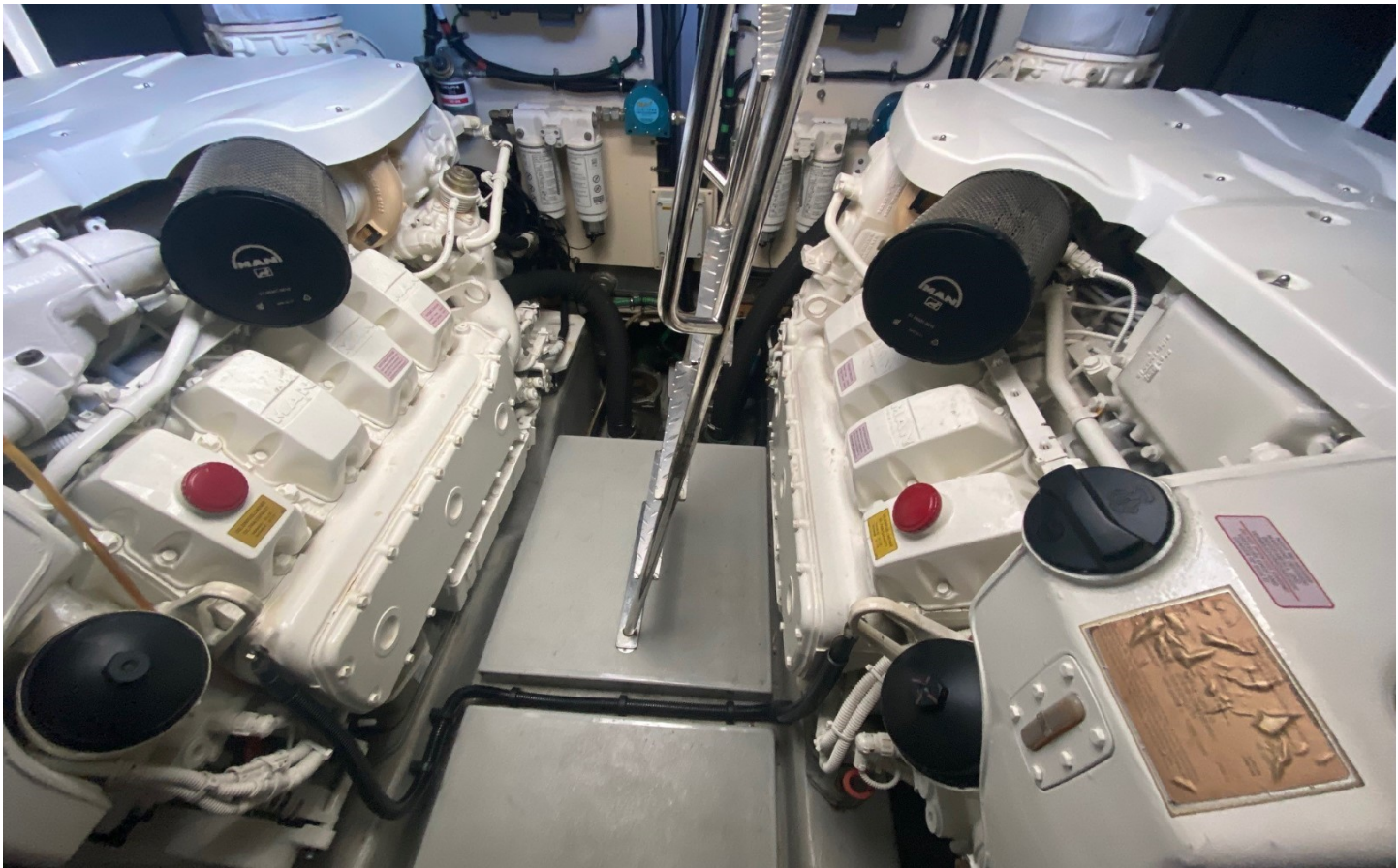




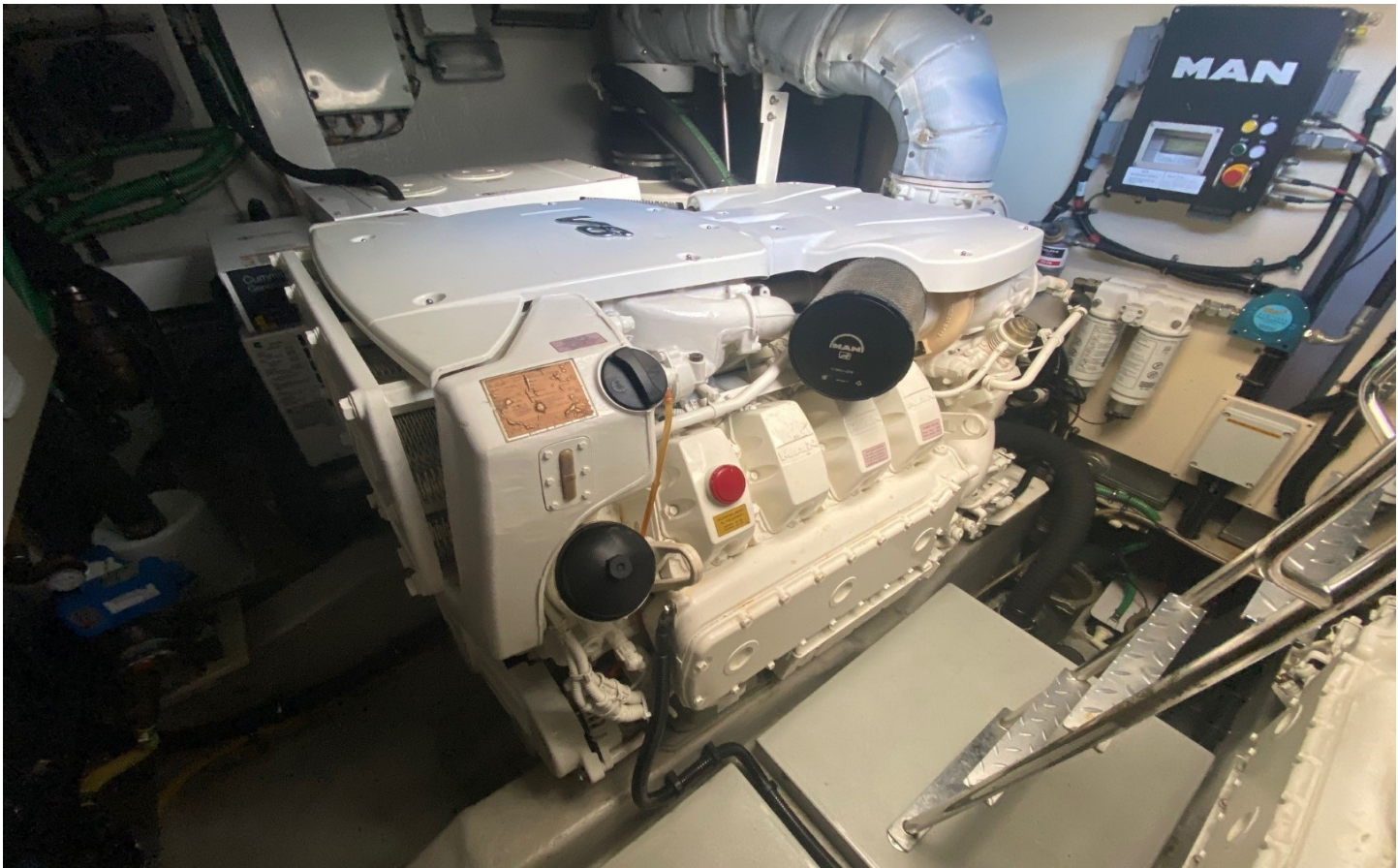






















## DISCLAIMER

Whilst every care has been taken in the preparation of these particulars, their accuracy is not guaranteed. They are intended as guides only and as such do not constitute a part of any contract. A prospective purchaser is advised to check all particulars and where appropriate and at his own expense to employ a qualified marine surveyor to carry out a survey and/or to have an engine trial conducted, which if conducted by us shall not imply any liability on our part. All dimensions, performance figures & range notes given are approximate and should be treated as a guide only. Pictures may be from a brochure or of a similar vessel. Engine hours shown are correct at the time of preparation of the particulars, but will vary with usage. Availability of specific vessels may be subject to change, we therefore recommend you call for confirmation. N.B. Ribs, dinghies, water toys and out-board engines are not included in the sale unless other wise stated.

+44 (0) 1305 766 504

SALES@JDYACHTS.COM

© JD YACHTS 2002 - 2024. ALL RIGHTS RESERVED.