

05/05/2024

PERSHING 65 LIMITED ZEUS



JD Yachts  
80 The Esplanade  
Weymouth  
Dorset  
United Kingdom  
DT4 7AA  
Tel: +44 (0)1305 766 504  
sales@jdyachts.com



**PERSHING 65 LIMITED**

**ZEUS**

EUR 589,950 INC TAX

## MAIN CHARACTERISTICS

Year:	2000
Hull Colours:	Blue
Lying:	Aveiro, Portugal
Engine(s):	2 x 1420 HP Diesel Caterpillar 3142E with Arneson Drives
Hours:	1460
Length:	19.70 m / 64' 8"
Beam:	4.700 m / 15' 5"
Draft:	1.400 m / 4' 7"
Weight:	32 tons
Fuel Capacity:	3500 litres / 769 gallons
Water Capacity:	1000 litres / 220 gallons
Accommodation:	7 berths in 3 cabins

## STANDARD SPECIFICATION

### HELM AREA AND ELECTRONICS

Navicontrol AP 303 gold Autopilot  
Furuno radar  
Engine alarms (CAT panels)  
TV antenna  
High speed compass  
Remote fuel shut off  
Remote air vent shut off E.R.  
Engine fire extinguisher remote control  
Electronic "trolling valve" control  
Electronic engine Acc./Rev. lever control with synchronism  
External fiberglass dashboard with hydraulic opening instrument compartment  
External fiberglass dashboard on co-pilot side with compartment  
Bow thruster controls  
CAT engine displays  
Pershing steering wheel  
Controls for trim tabs and Arneson Drives

(2) Flap indicators  
(2) Trim indicators  
Rudder angle  
Controls for lighting, bilge pumps, windlass  
Quicksilver engine throttles  
Double helm seat  
Canvas sunroof overhead

## **COCKPIT**

Fore and aft sunbathing cushions  
U-shaped seating to port  
Teak flooring  
Fiberglass extendable table with pedestal  
Outdoor kitchen and wet-bar to starboard  
Fiberglass refrigerator outside cockpit, 32 gals.  
Fiberglass sink with fresh water faucet  
External sofa in helm area w/ smooth Ivory vinyl seat cushions and backrest  
2-Burner stove in cockpit  
Ice maker  
Fridge  
(12) Side and central hard top chrome ceiling lights  
(2) Stern swim platform lights  
Trash bin  
Sliding stern door, glass and stainless steel  
Sliding fiberglass door with lock  
Engine compartment inspection shutter

## **LOWER SALOON**

C-shaped leather sofa to port and galley to starboard  
Leather wrapped ottomans with storage  
(12) Ceiling lights with metal housings  
Cherry inlay ceiling accents  
(4) Stainless steel portholes  
Digitally-controlled A/C system  
Vinyl fabric wall coverings  
Polished cherry wood work and cabinetry  
Natural teak steps from top deck  
Cross-paneled ceiling covered with Magilite style fabric  
Accent lights  
Carpeted flooring  
Glass hi/lo coffee table

## **GALLEY**

Concealed under cherry countertops to starboard  
Refrigerator

Wood floors  
Freezer  
Polished cherry cabinetry  
Exhaust fan  
Drawers with cutouts for cutlery  
Microwave oven  
Stainless steel sink basin with folding tap  
Galley unit in polished Cherry  
(4) Burner electric ceramic cooktop

### **MASTER STATEROOM**

King size centerline berth  
Digitally-controlled A/C system  
Vinyl fabric wall coverings  
Polished cherry wood work and cabinetry  
Ceiling lights with metal housings  
Cherry inlay ceiling accents  
Carpeting  
Hanging locker with clothes rod, internal light, drawers & shelves  
Nightstands with polished Cherry  
Sharp flatscreen TV  
Digitally-controlled A/C system  
(2) Reading lamps  
Chest of drawers in polished Cherry  
(3) Stainless steel portholes  
Mirrored headboard  
Fridge

### **MASTER HEAD**

Towel rack  
Shower with Plexiglass door and stainless steel hardware  
Teak shower grating  
Ivory fiberglass shower column  
(4) Lights  
Shower faucet  
Basin faucet  
Washbasin of Ivory fiberglass with lacquered cabinet door  
Stainless steel porthole  
Ivory fiberglass flooring  
Hanging locker with polished Cherry doors  
Towel rack  
Mirror  
Sink top of natural Travertine marble  
Electric freshwater toilet

### **VIP STATEROOM**

Polished Cherry cabinetry  
Center-lined double berth  
Closet with clothes rod & internal light  
Berth border covered with vinyl fabric  
Nightstands with polished Cherry surface  
Mirrored headboard  
Digitally-controlled A/C system  
Double bed mattress  
(2) Reading lights  
(2) Stainless steel portholes  
Sliding cover for hatchway  
Digitally-controlled A/C system  
Vinyl fabric wall coverings  
Polished cherry wood work and cabinetry  
Ceiling lights with metal housings  
Carpeting

### **GUEST STATEROOM**

Polished Cherry locker door with inside mirror  
Nightstand with polished Cherry surface and border  
Digitally-controlled A/C system  
Vinyl fabric wall coverings  
Polished cherry wood work and cabinetry  
Ceiling lights with metal housings  
Carpeting  
(2) Single berths  
(1) Pullman berth  
(2) Reading lamps  
(2) Mattresses  
(2) Stainless steel portholes  
Cross-paneled ceiling covered with vinyl  
Sharp flatscreen TV  
Vinyl upholstered headboard  
Hanging locker in bulkhead with polished Cherry doors

### **VIP/GUEST HEAD**

Towel rack  
Shower with Plexiglass door and stainless steel hardware  
Teak shower grating  
Ivory fiberglass shower column  
(4) Lights  
Shower faucet  
Washbasin faucet  
Washbasin of Ivory fiberglass with lacquered cabinet door  
Stainless steel porthole  
Ivory fiberglass flooring  
Hanging locker with polished Cherry doors

Towel rack  
Mirror  
Sink top of natural Travertine marble  
Electric freshwater toilet

## **CREW QUARTERS**

Crew cabin with head forward through exterior hatch on bow  
Single bead  
Sink  
Toilet  
Head

## **HULL & DECK EQUIPMENT**

Anchor Bruce 66 lbs. with lock  
Stainless steel railing  
Stainless steel anchor hawser  
(4) Stainless steel mooring cleats  
Rub-rail with stainless steel insert rubbing strake  
Galvanized anchor chain  
Sportlight  
Huge locker under stern sun pad  
Hydraulic davit  
Hydraulic bathing ladder  
Sliding canvas top  
Navigation lights  
Telescopic extensible hideaway hydraulic gangway with remote control  
Teak swim platform and steps  
Hydraulic retractable swim ladder  
Fiberglass superstructure with layered glass windscreen  
Stainless steel black water extraction cap  
Stainless steel fresh water filling cap  
(2) Stainless steel fuel filling caps  
(2) Stainless steel aft platform grab rods  
Tender Garage  
2000W dual command windlass  
(2) Hideaway side mooring cleats  
Stainless railing on the aft spoiler

## **ENGINE ROOM**

(2) 24V Multi-function hydraulic control stations  
A/C compressor  
Automatic powder fire suppression system  
(4) Seawater basket filters  
(2) Fuel separator filters  
19 kW Kohler 60Hz power generator with soundproof housing

Thermal insulation/soundproofing  
Fuel level check  
Plank ribbing in fiberglass  
Waterproof bulkhead  
(4) Ceiling light fixtures  
Manual pump fuel drainage/loading  
Dynamic air intakes on the bulkheads with remote control closure  
Light alloy and teak step ladder  
Stainless steel engine exhaust raiser  
Structural fuel tank, fiberglass and light alloy  
Fiberglass engine exhaust mufflers  
Bilge pump engine suction by-pass valves  
Generator manifold and exhaust fume separator  
Dewalt compressor  
Glendinning shore power bucket  
8 gals. water heater (230V)  
Electric bilge pump with manifold  
(2) Electric bilge pumps  
Structural fresh water tank, fiberglass and light alloy  
Fiberglass gray water tank (34 gals.)  
Stainless steel black water tank (68 gals.)  
Hydraulic flap system  
Bronze water inlets and outlets  
ZF transmissions

## **ELECTRICAL SYSTEM**

(2) Engine starting batteries, 260A 24V  
Generator starting battery, 100 A 12V  
(2) Bow thrusters 160A 24V  
(2) Engine service batteries, 260A 24V  
Electric engine room extractors  
Mass insulation with copper plait  
Parallel on batteries  
Battery charger partition  
110V GFI Sockets (1 per room)  
Engine connection panel  
Accessory control panel with cut-out switches  
Power supply panel in engine room  
Galvanic protection with zinc  
Battery cut-off  
Voltage measuring instruments, 24V/230V  
Battery charger, Mastervolt, 24V 15A  
Battery charger, Mastervolt, 24V 75A  
Battery charger, Mastervolt, 12V 10A

**EXTRAS**

- Refit by Neptune Yacht Refit Services
- Condaria Reverse Cycle Air Conditioning
- 2 x Air Conditioning Units to Cockpit
- Bow Thruster with Remote Control
- Stern Thruster with Remote Control
- 20 KVH KOHLER Generator
- Besenzoni Hydraulic Passarelle
- Besenzoni Hydraulic Crane, 400kg
- Teak Laid Cockpit
- Teak Laid Bathing Platform
- NEW LED Lights to Cockpit
- NEW LED Lighting to Name on the Stern
- Garmin GPSmap KSV Chartplotter
- NEW VHF Radio
- NEW Safety Equipment
- Fully Fitted Crew Cabin
- TV's to all cabins
- Radio/CD's to all cabins
- 4 Ring Hob to Galley

**OWNER COMMENTS**

NEW Epoxy Primer & Antifoul NEW Anodes & Engine Check

She has just be cleaned (including teak) and polished, ready for her new owners

















05/05/2024

PERSHING 65 LIMITED ZEUS





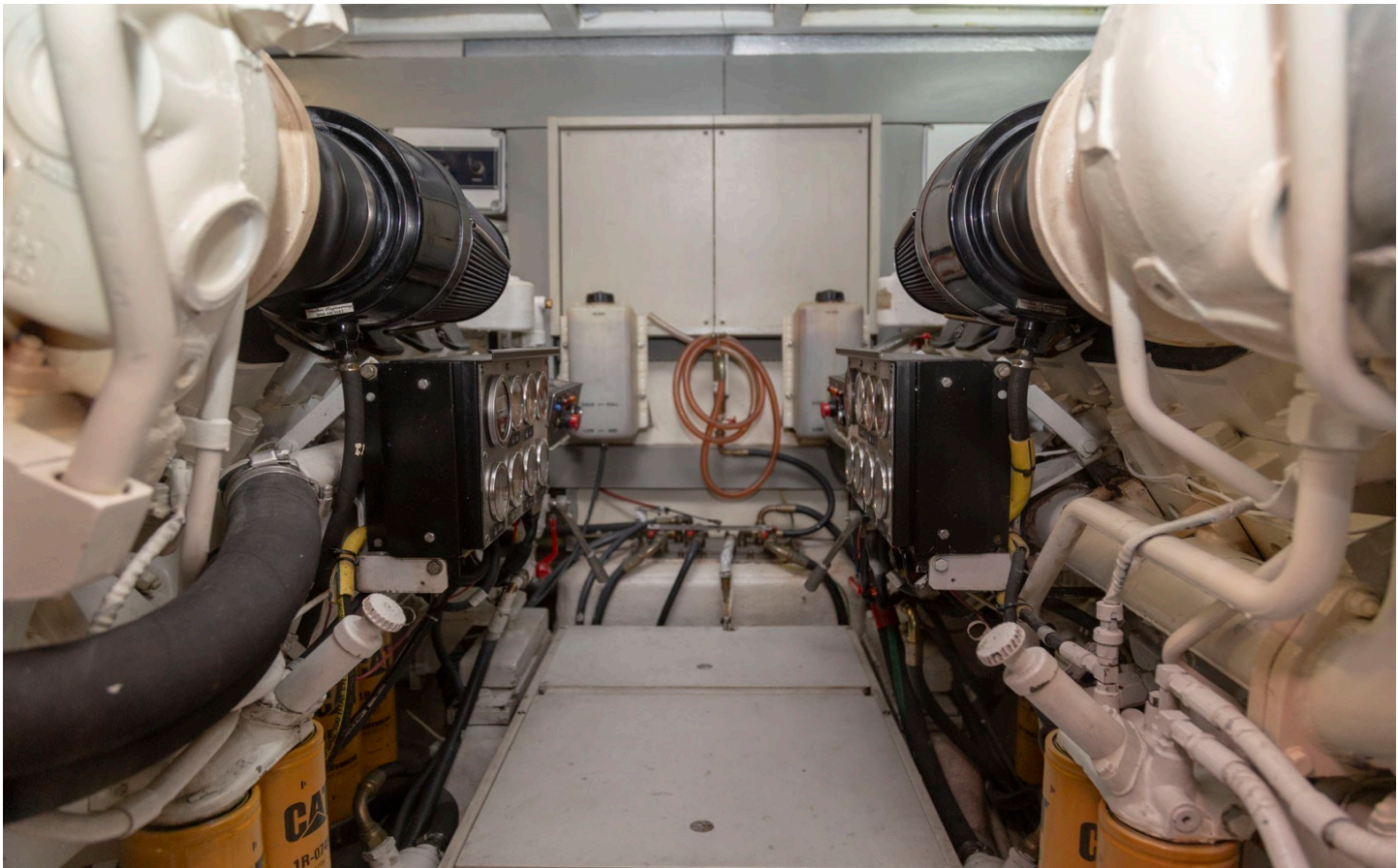




















## DISCLAIMER

Whilst every care has been taken in the preparation of these particulars, their accuracy is not guaranteed. They are intended as guides only and as such do not constitute a part of any contract. A prospective purchaser is advised to check all particulars and where appropriate and at his own expense to employ a qualified marine surveyor to carry out a survey and/or to have an engine trial conducted, which if conducted by us shall not imply any liability on our part. All dimensions, performance figures & range notes given are approximate and should be treated as a guide only. Pictures may be from a brochure or of a similar vessel. Engine hours shown are correct at the time of preparation of the particulars, but will vary with usage. Availability of specific vessels may be subject to change, we therefore recommend you call for confirmation. N.B. Ribs, dinghies, water toys and out-board engines are not included in the sale unless other wise stated.

+44 (0) 1305 766 504

SALES@JDYACHTS.COM

© JD YACHTS 2002 - 2024. ALL RIGHTS RESERVED.